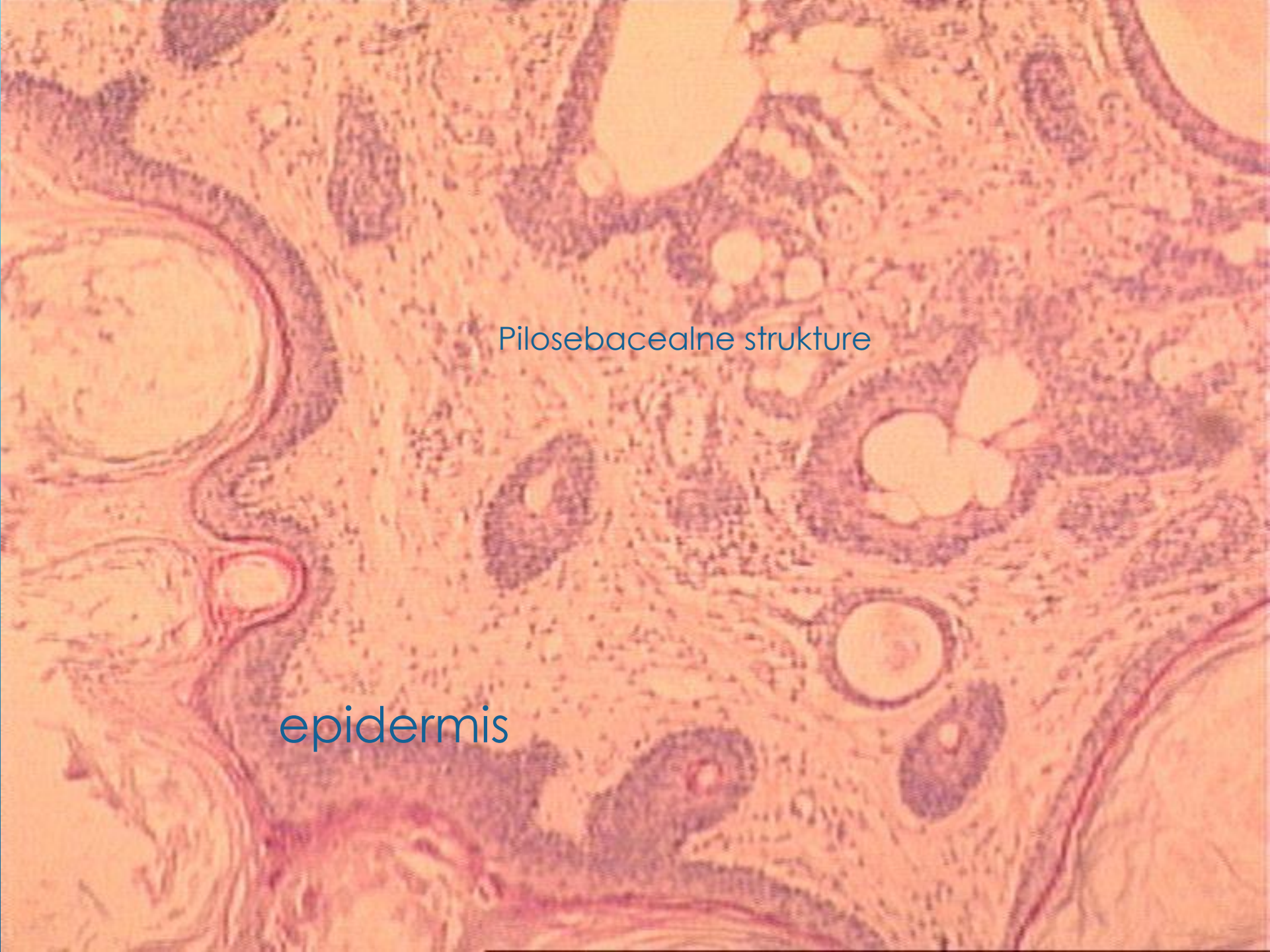


MUŠKI I ŽENSKI REPRODUKTIVNI TRAKT

Dr sci. med. Mirjana Miladinović

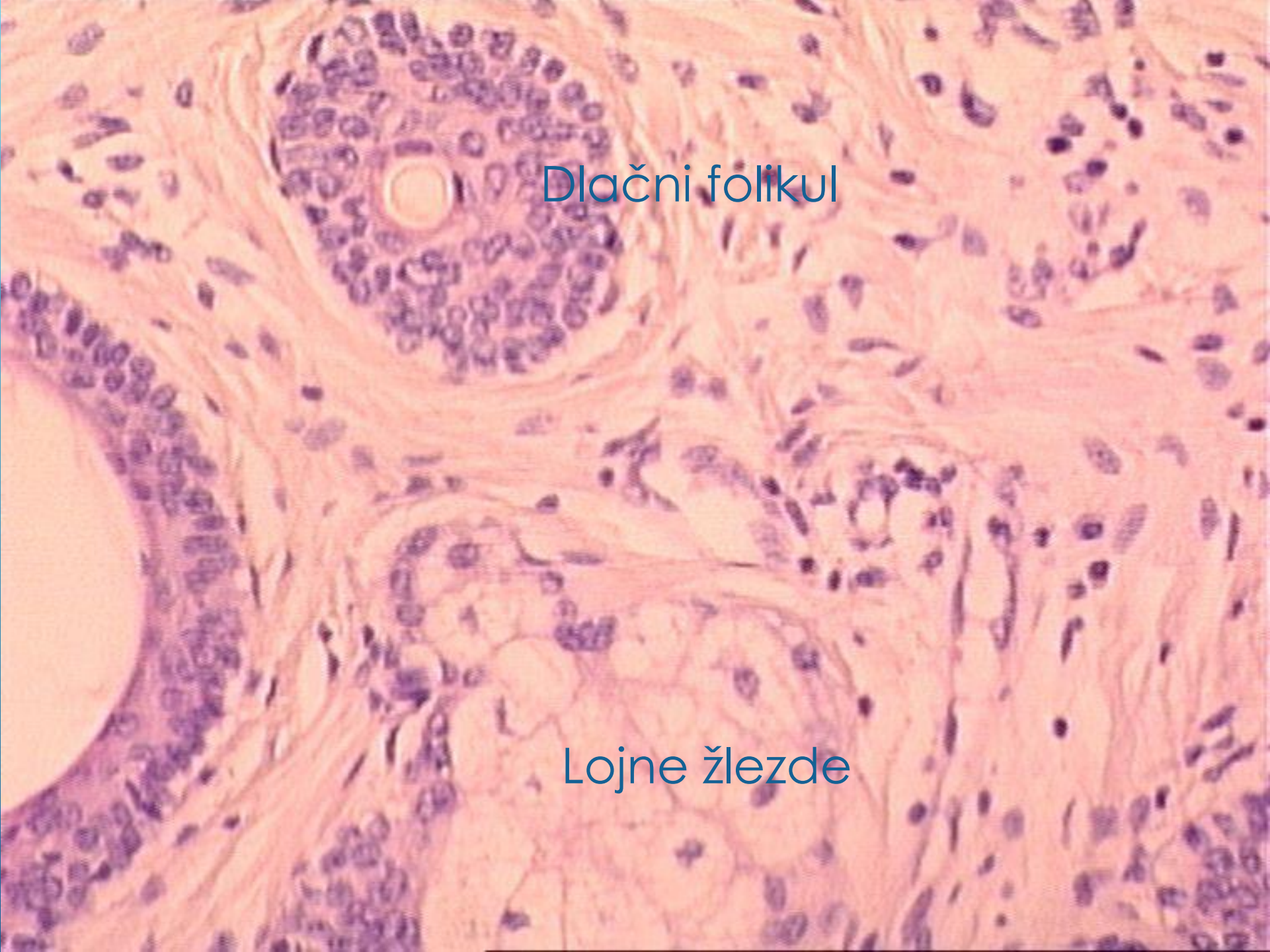
Teratoma cysticum ovarii





Pilosebacealne strukture

epidermis



Dlačni folikul

Lojne žlezde

Bronh

Respiratorni epitel

Hrskavica





Glija



Tireoidea

This histological micrograph shows a cross-section of various tissues. On the left, the thyroid gland (Tireoidea) is visible, characterized by follicles with pink-stained colloid and cuboidal epithelial cells. In the upper right, the salivary gland (Plijuvačne žlezde) is present, showing acinar structures. The lower left area contains adipose tissue (Masno tkivo) with large, clear lipid droplets. The lower right area shows smooth muscle (Glatki mišić) with spindle-shaped cells and a dense network of fibers. The entire image is set against a blue background with white diagonal lines on the right side.

Plijuvačne žlezde

Masno tkivo

Glatki mišić

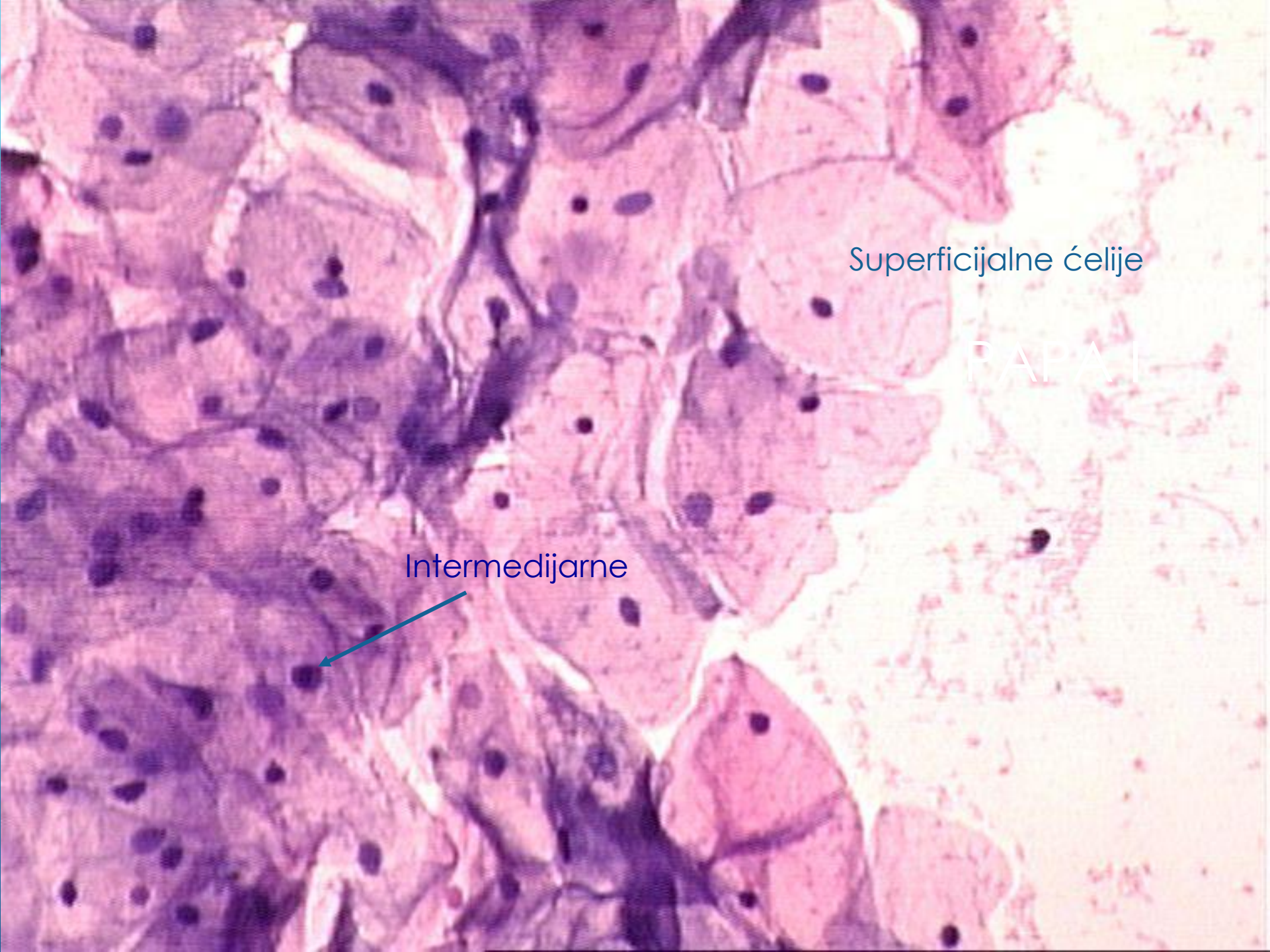
A microscopic image of skin tissue, likely from the dermis, stained with hematoxylin and eosin (H&E). The image shows a dense population of cells with purple nuclei and pink cytoplasm/extracellular matrix. A prominent feature is a circular structure in the lower center, which is a sebaceous gland. The surrounding tissue consists of various cell types, including fibroblasts and possibly some inflammatory cells. The overall appearance is that of a histological section of skin.

Glijalno tkivo

Lojna žleza

PAPA I, PAPA II, PAPA IV





Superficialne ćelije

RAFAI

Intermedijarne



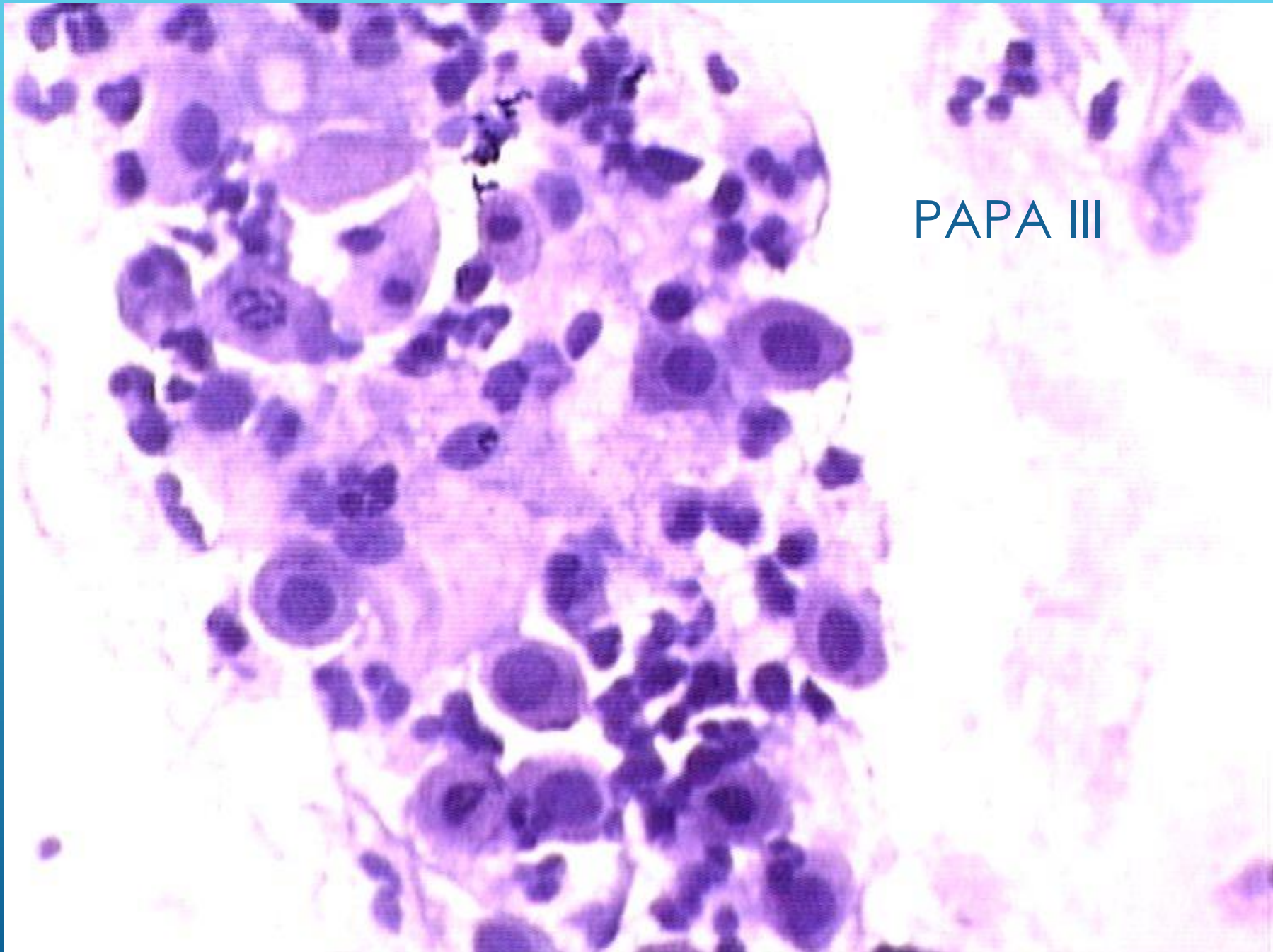


parabazone

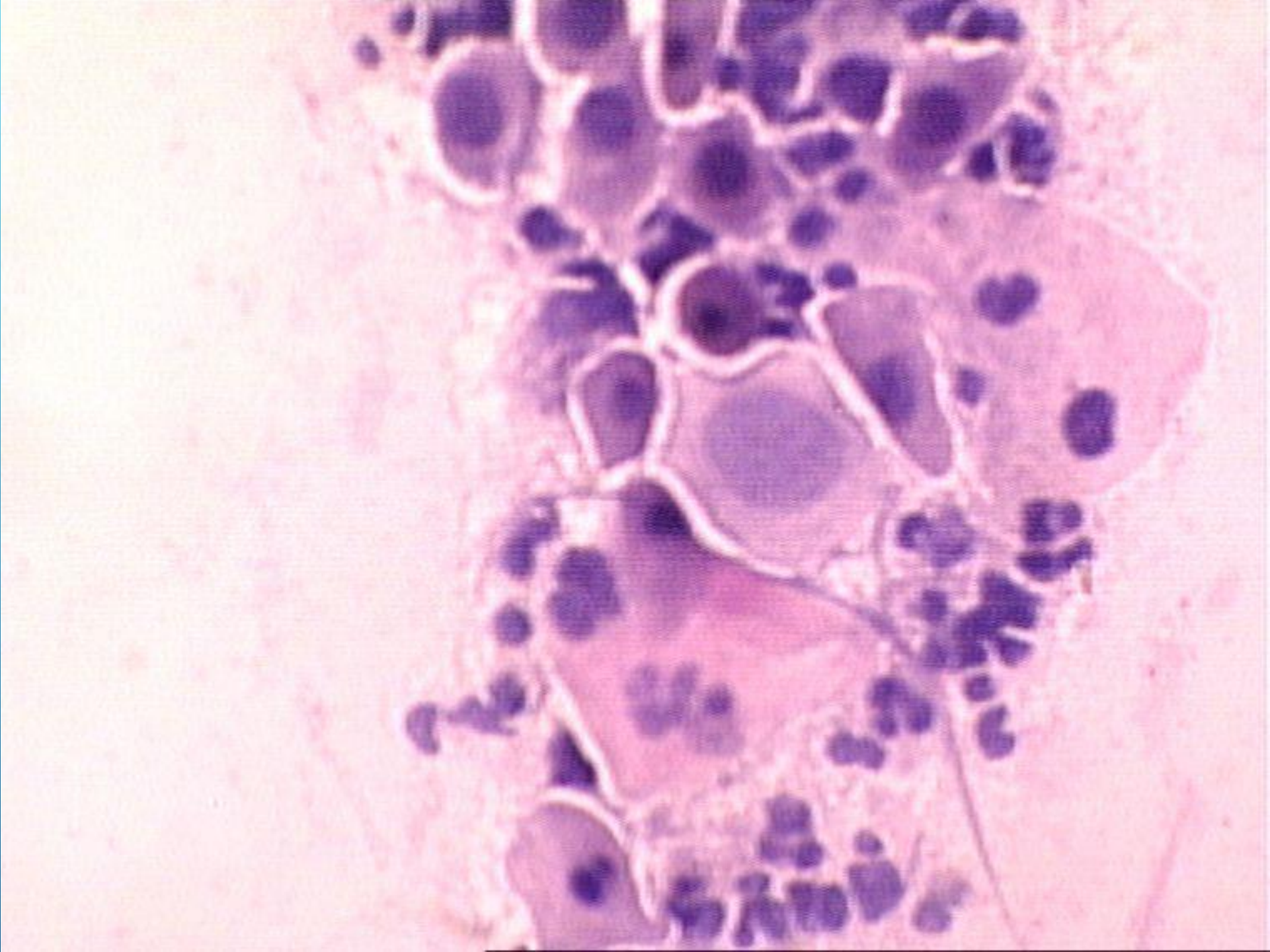


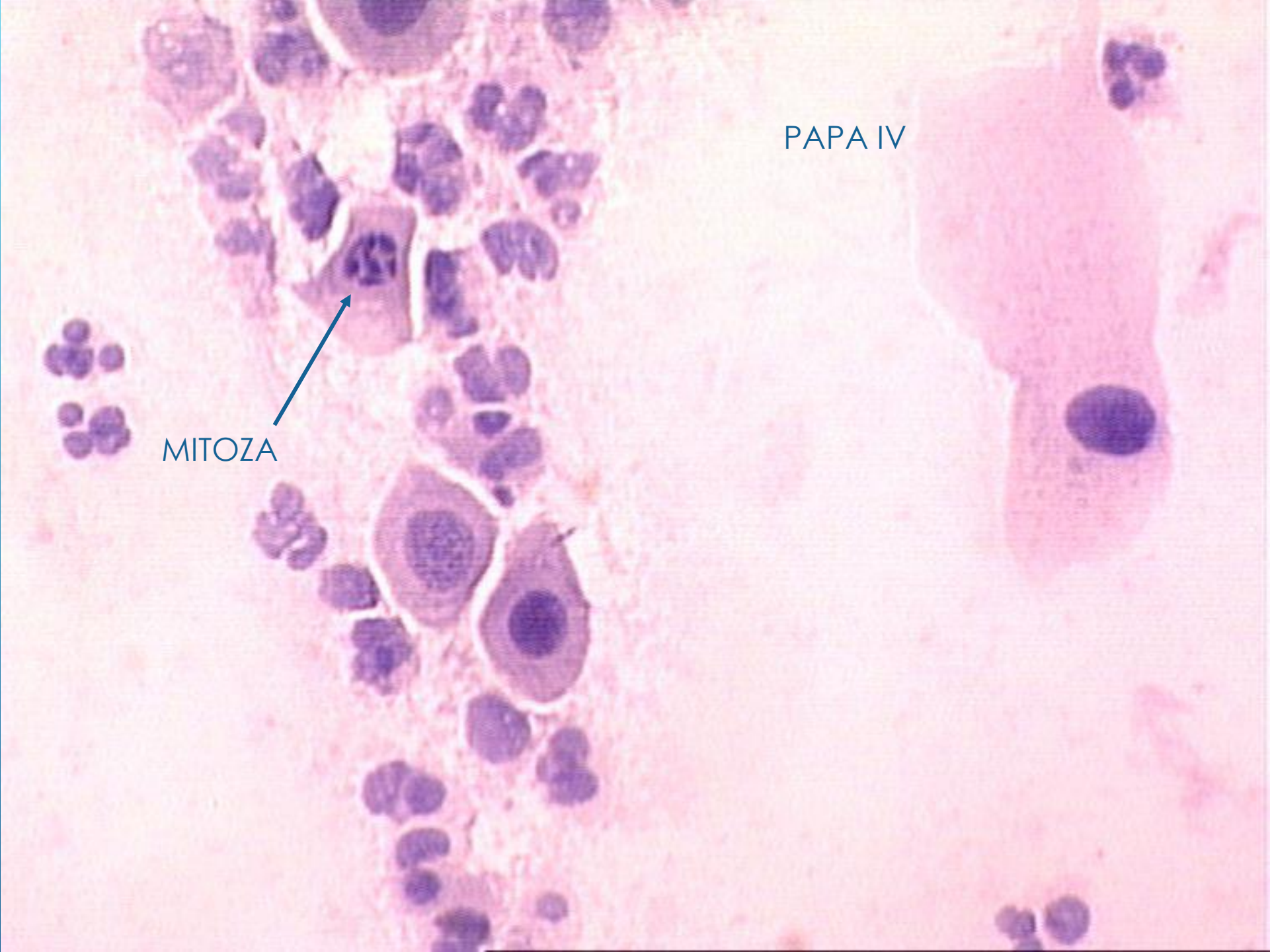


bakterije



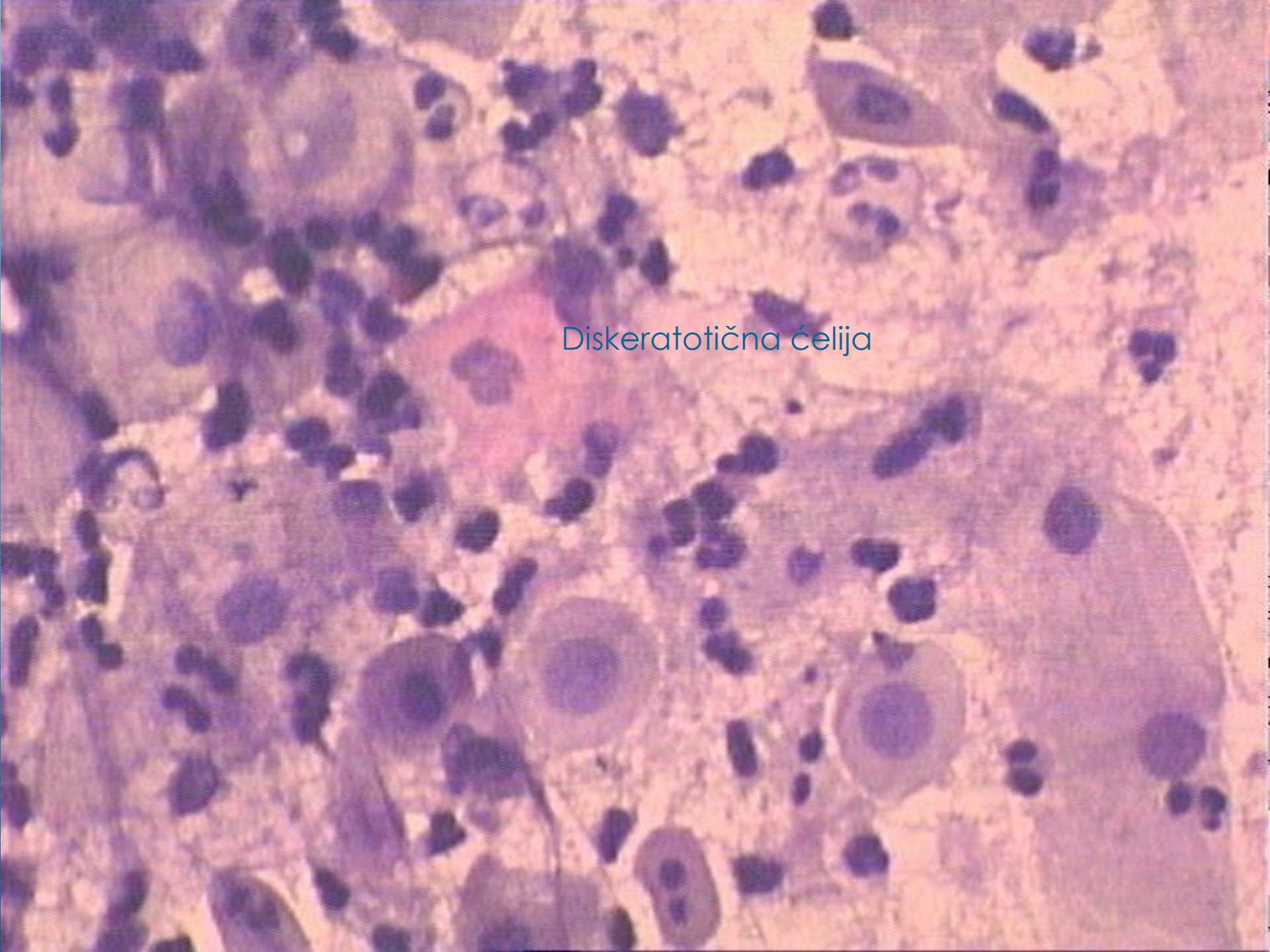
PAPA III





PAPA IV

MITOZA



Dyskeratotic cell



Neoplasia intraepitheliale cervicis gradus III

CIN III

High grade squamous intraepitheliale lesion

Decorative white lines consisting of several parallel diagonal strokes in the bottom right corner of the slide.

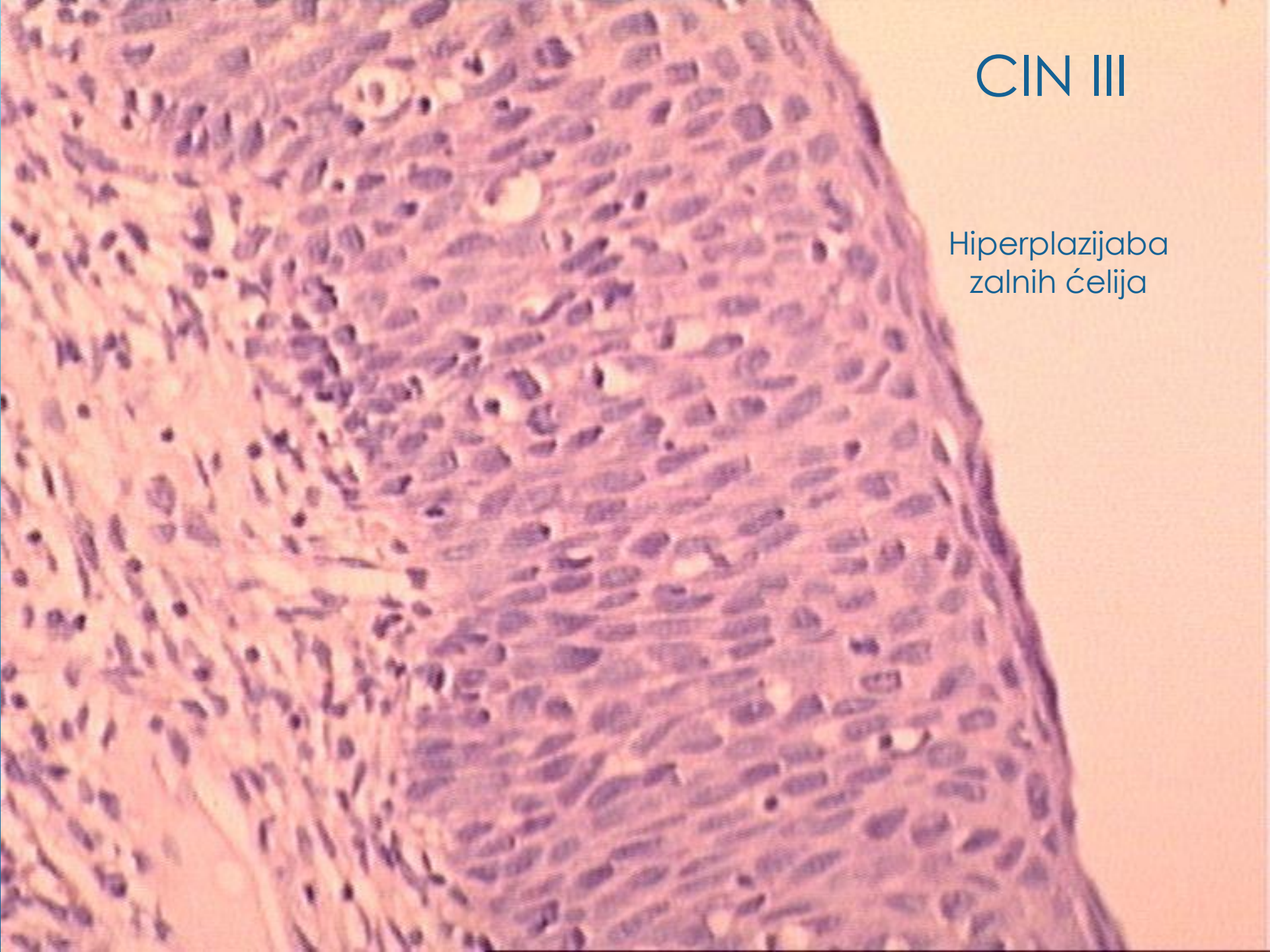


granica



CIN III

Hiperplazijaba
zalnih ćelija





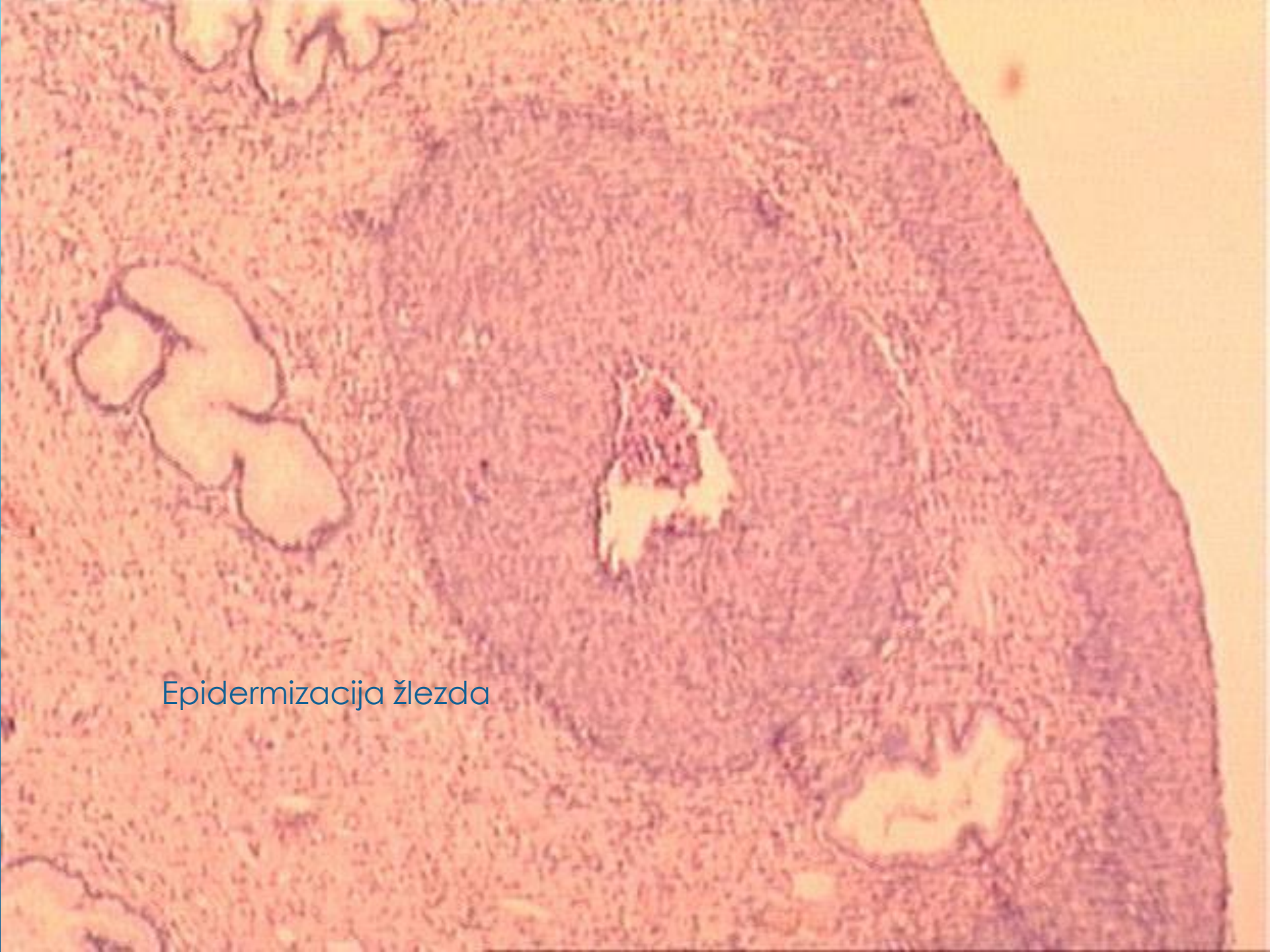
mitoze





Bazalna membrana





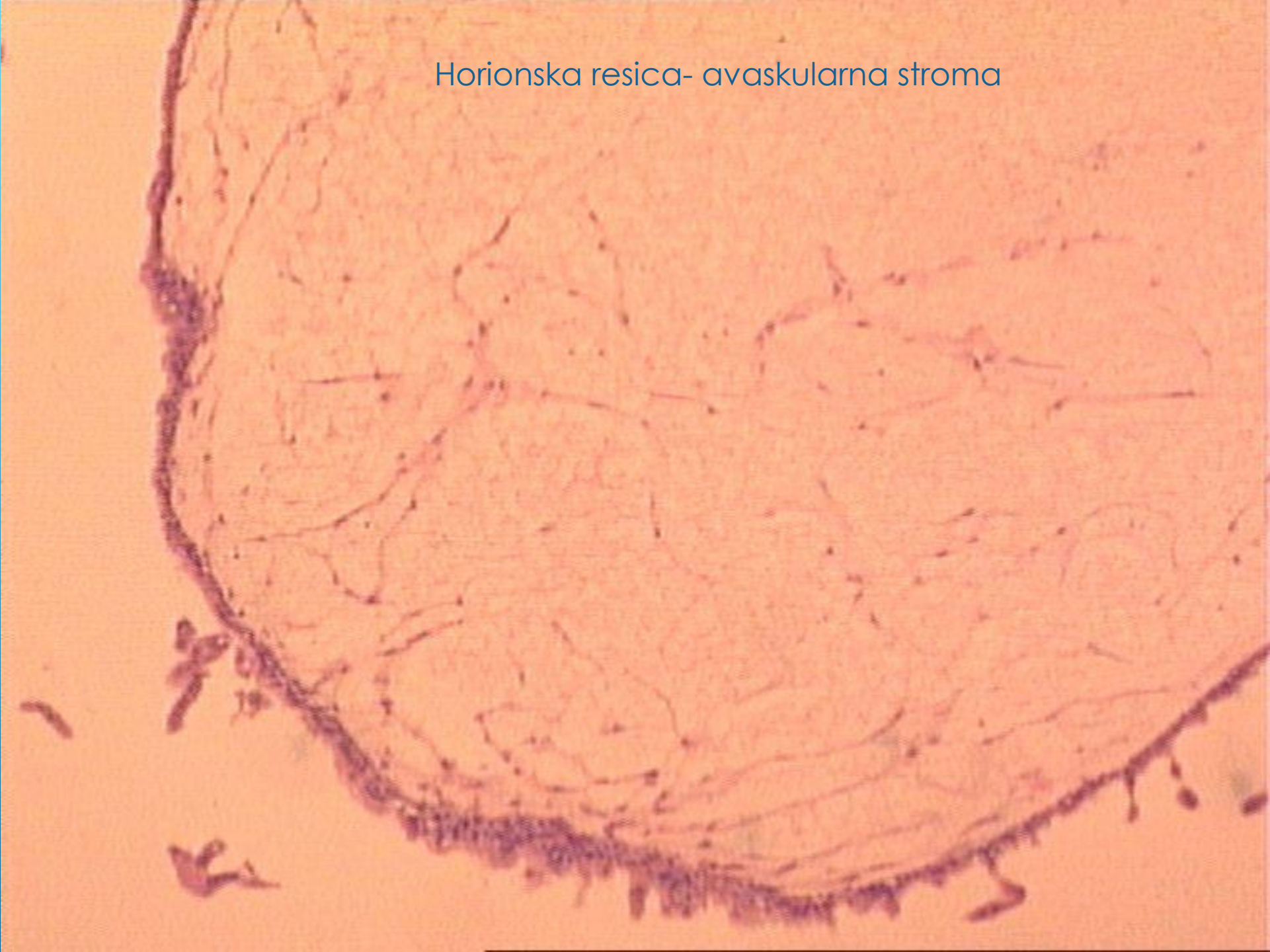
Epidermizacija žlezda



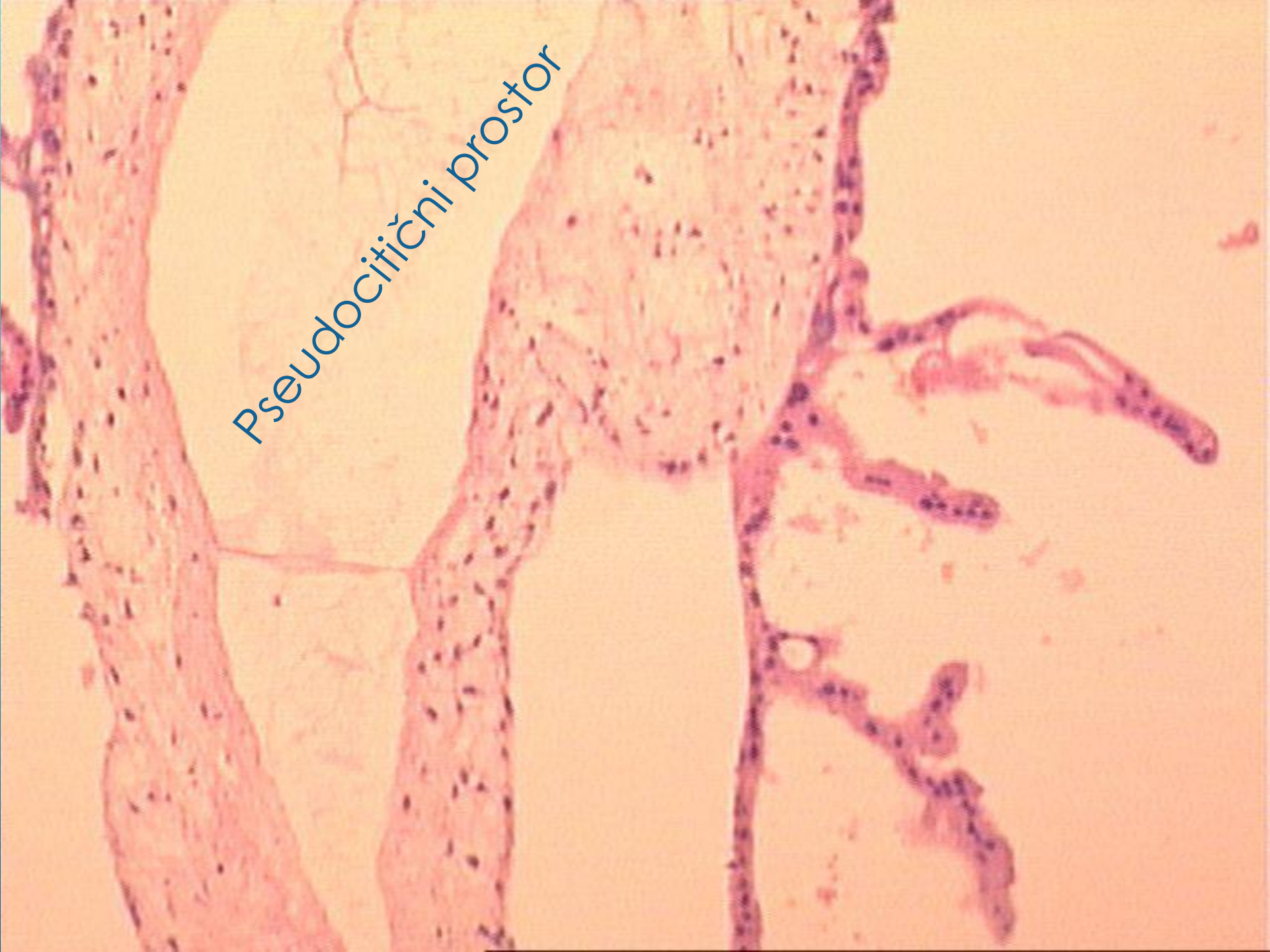
Mola hydatidosa



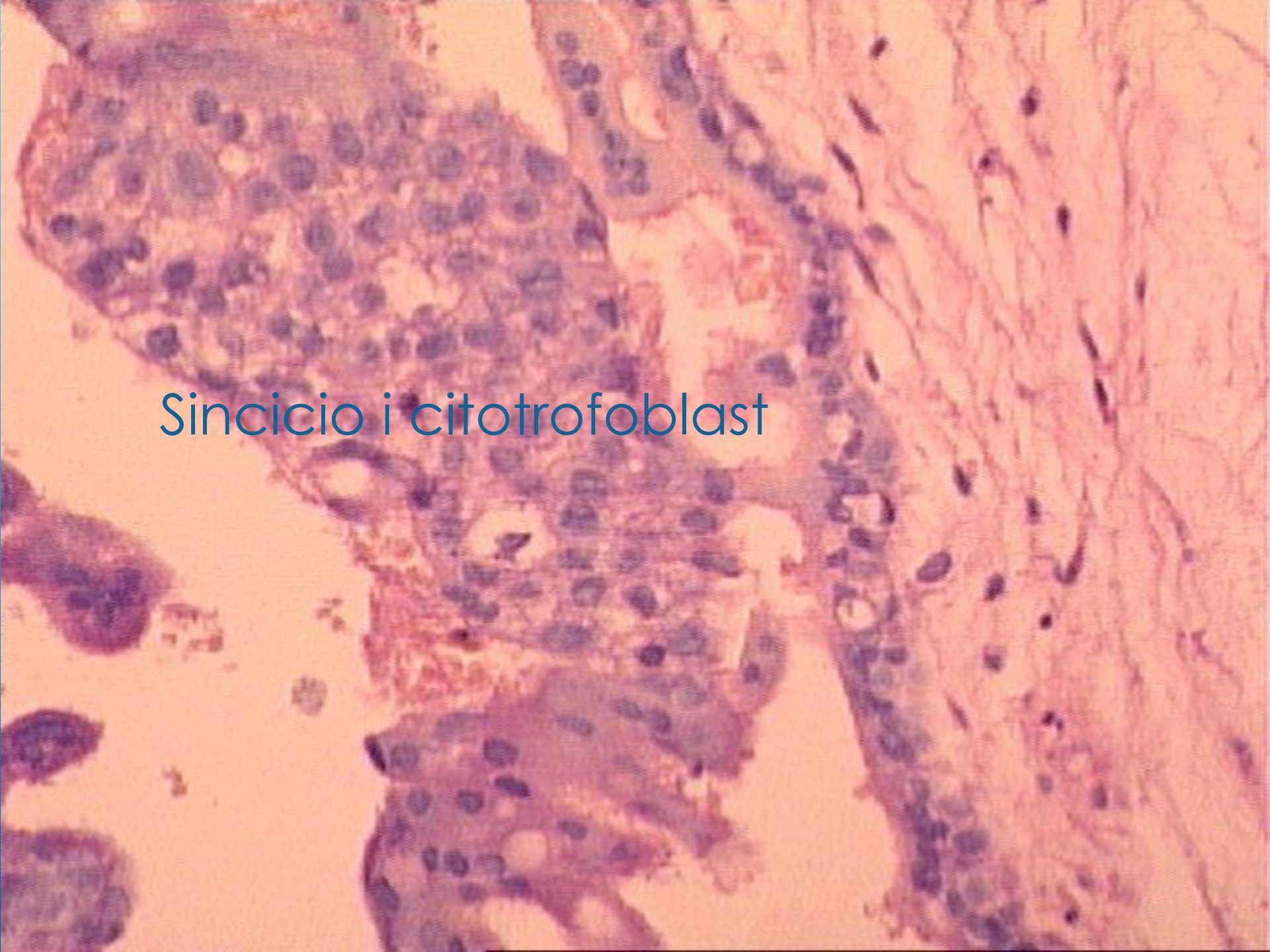
Horionska resica- avaskularna stroma



Pseudocitični prostor



Sincicio i citotrofoblast





citotrofoblasti

Sinciciotrofoblast

Nekrotična decidua

A histological micrograph of a placental section stained with hematoxylin and eosin (H&E). The image shows the chorionic plate and the decidua. The chorionic plate contains fetal blood vessels (arteries and veins) surrounded by chorionic trophoblasts. The decidua shows the maternal blood supply and the decidua capsularis. The text 'Proliferacija trofoblasta' is overlaid on the image, indicating the presence of trophoblastic proliferation, which is a common finding in the decidua and chorionic plate.

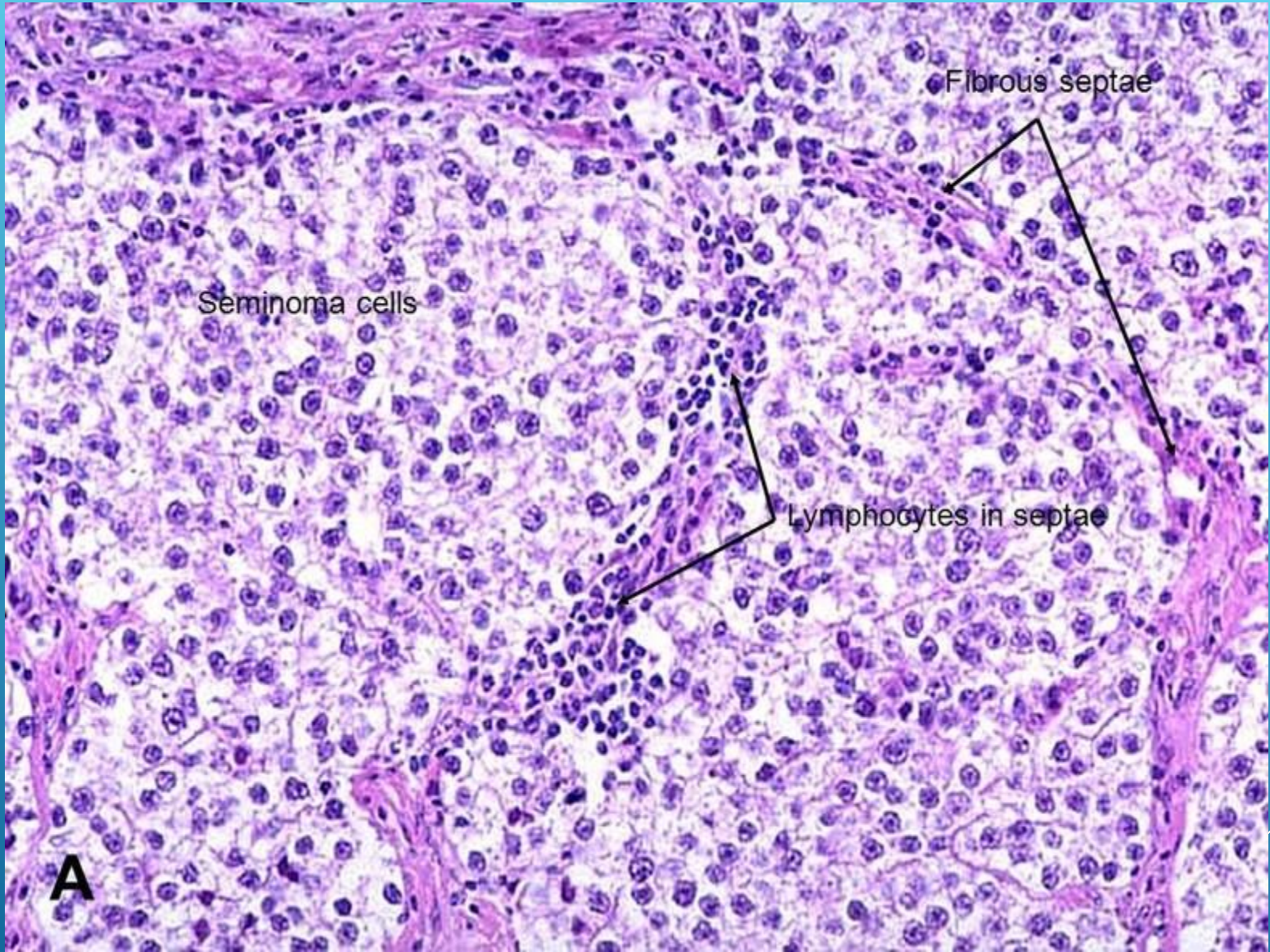
Proliferacija trofoblasta

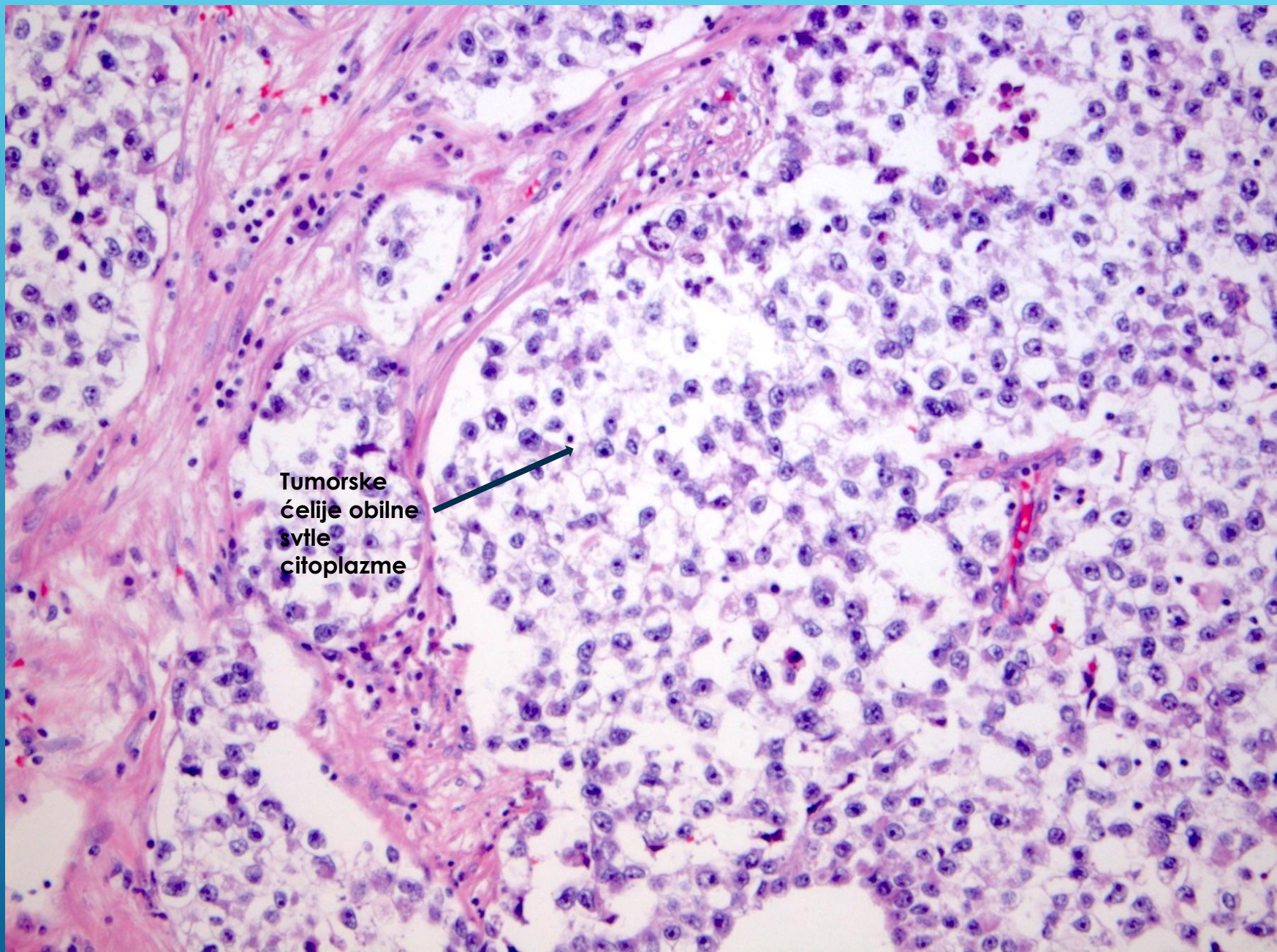
SEMINOMA TESTIS

The background is a solid blue gradient. On the right side, there are several white, parallel diagonal lines that create a sense of motion or depth, extending from the bottom right towards the top right.

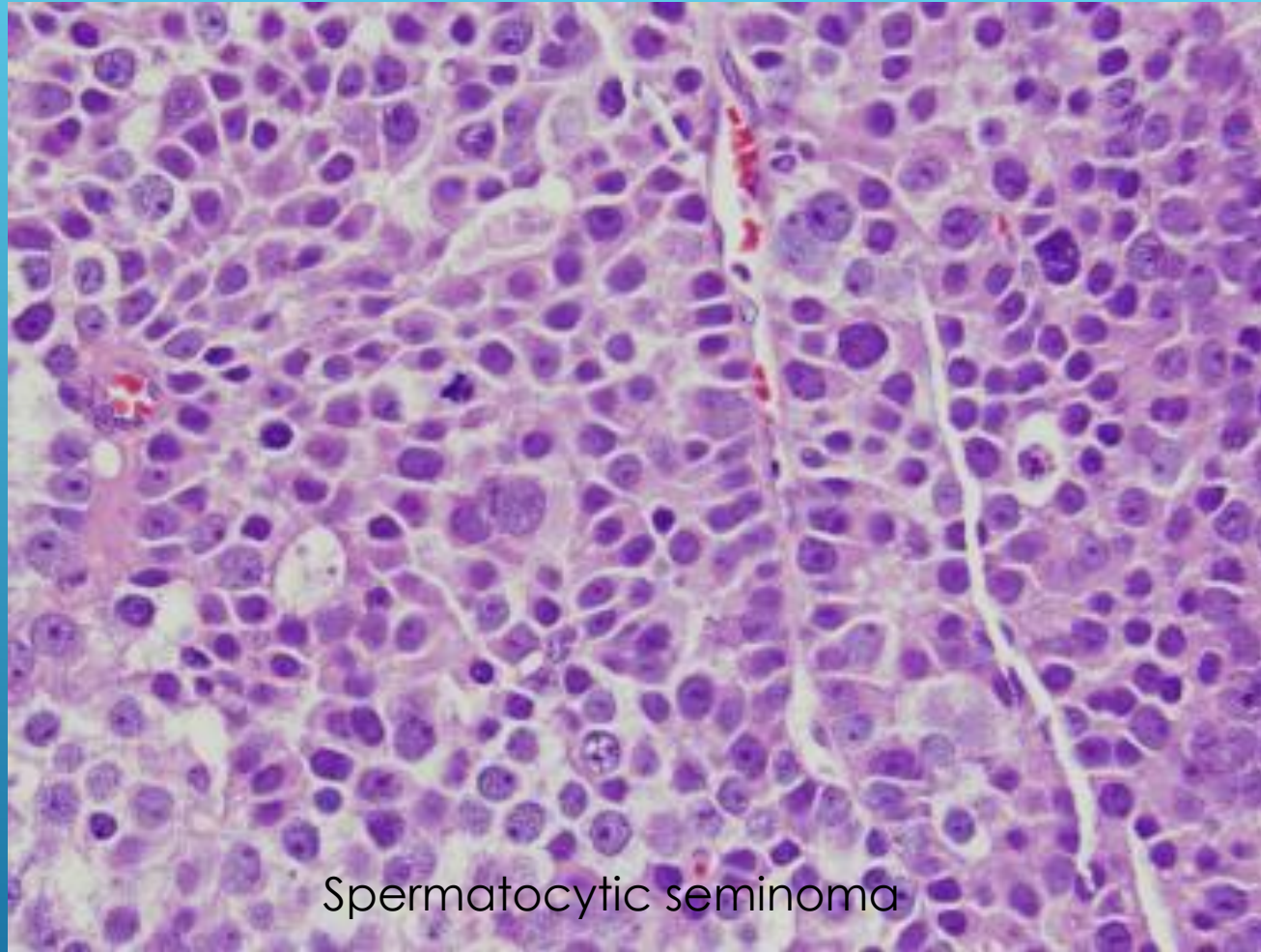
Seminom





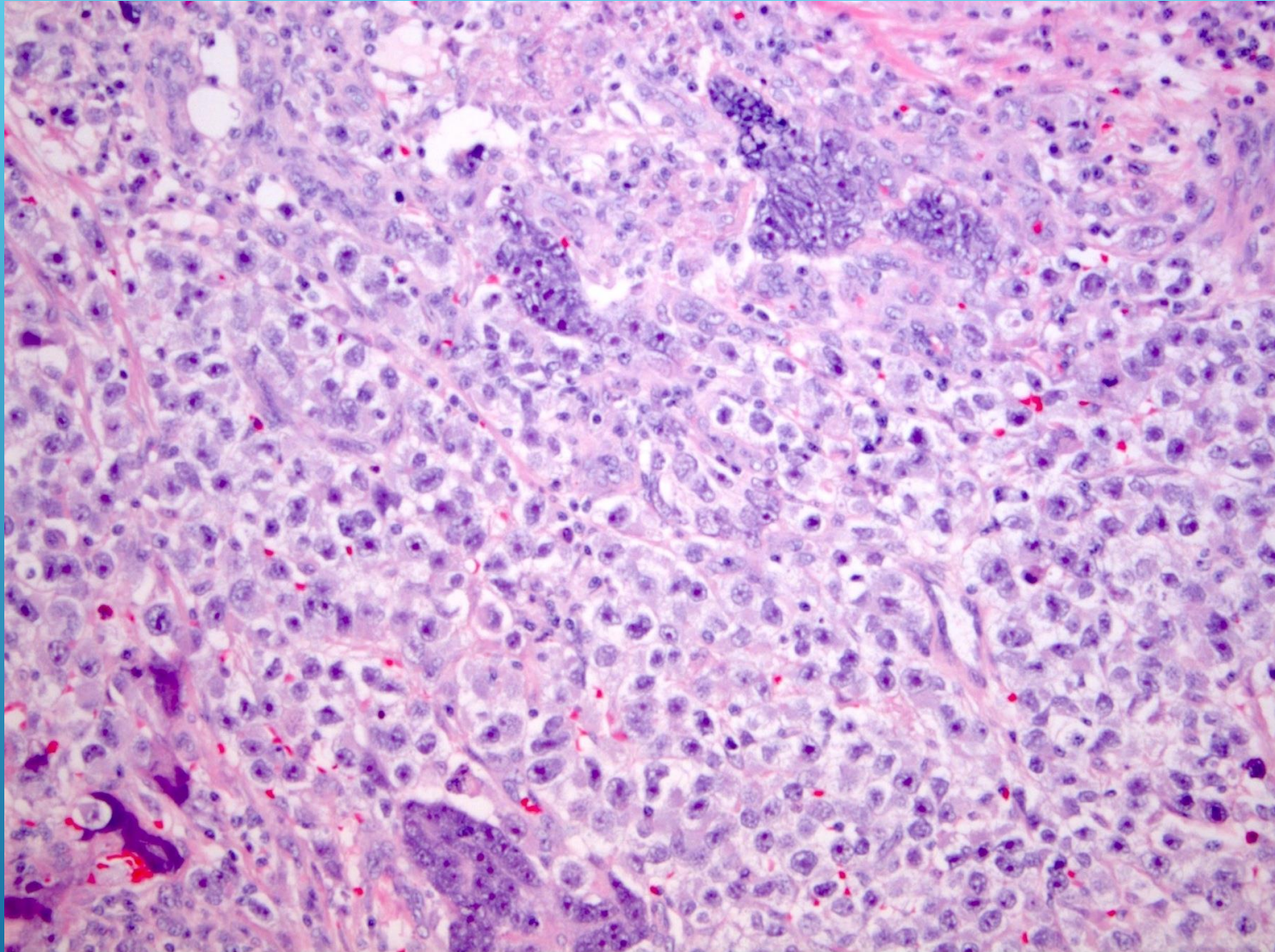


Tumorske
ćelije obilne
svtlo
citoplazme



Spermatocytic seminoma

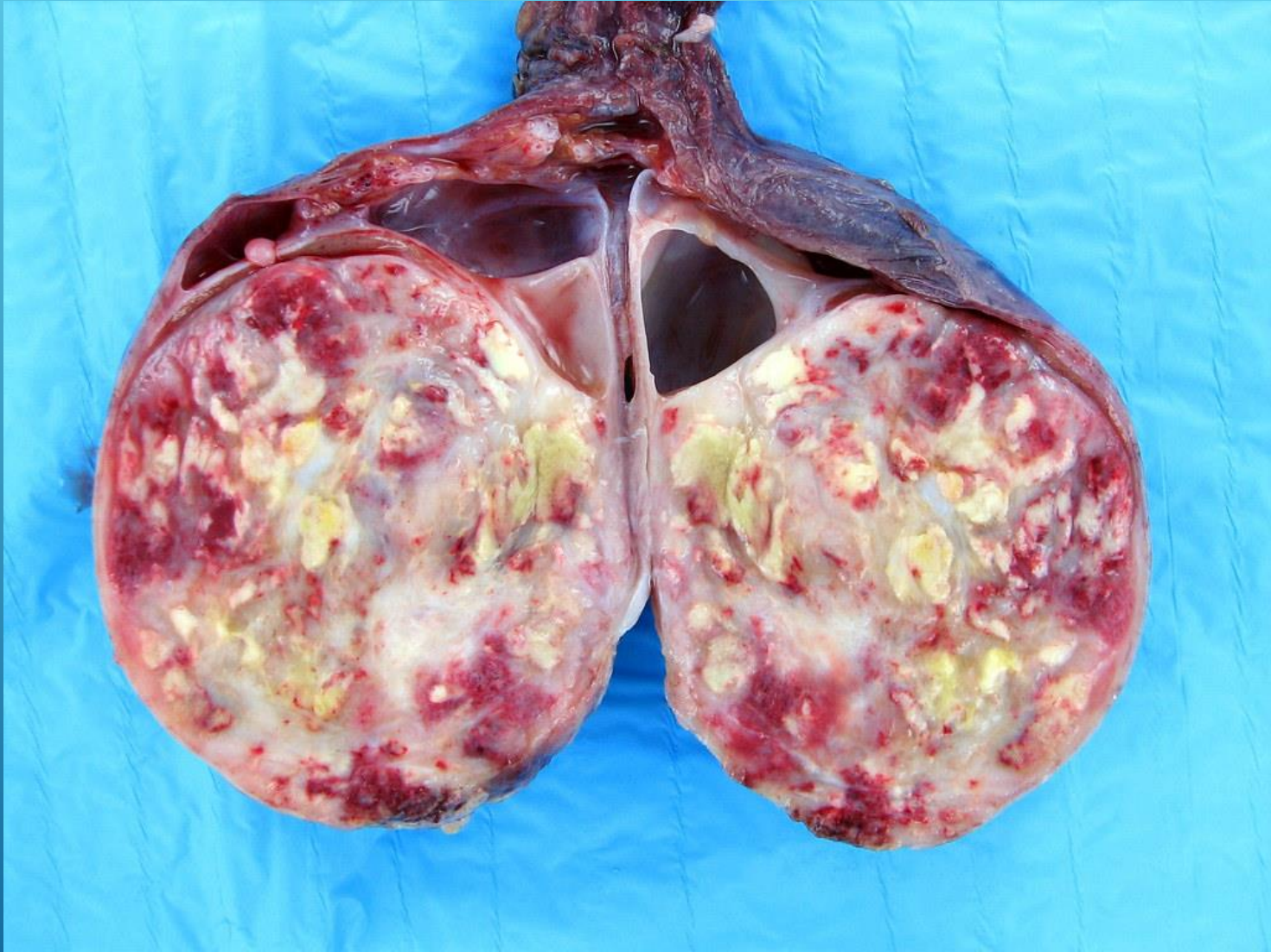


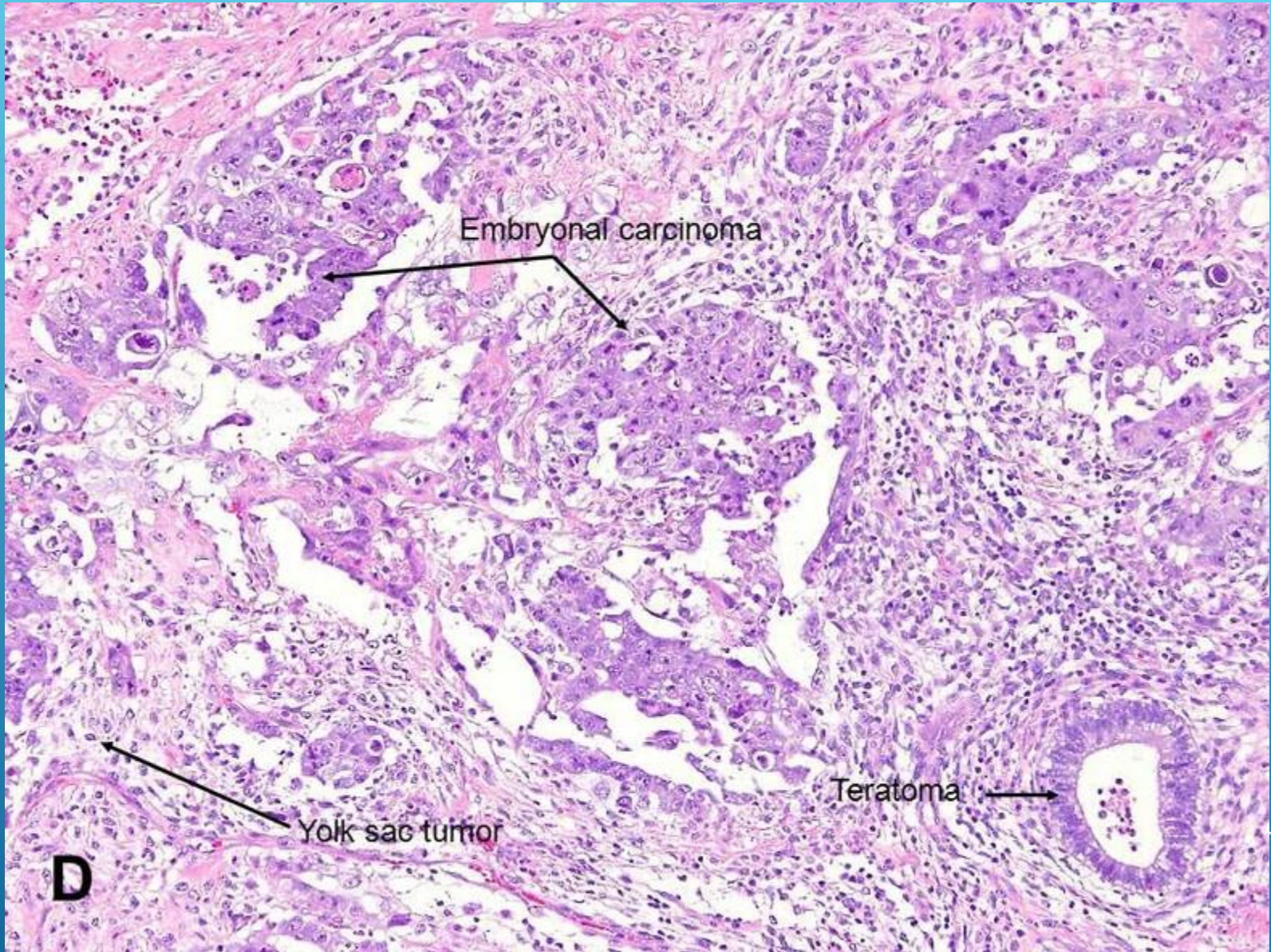


Multinucleated syncytiotrophoblasts in seminoma.

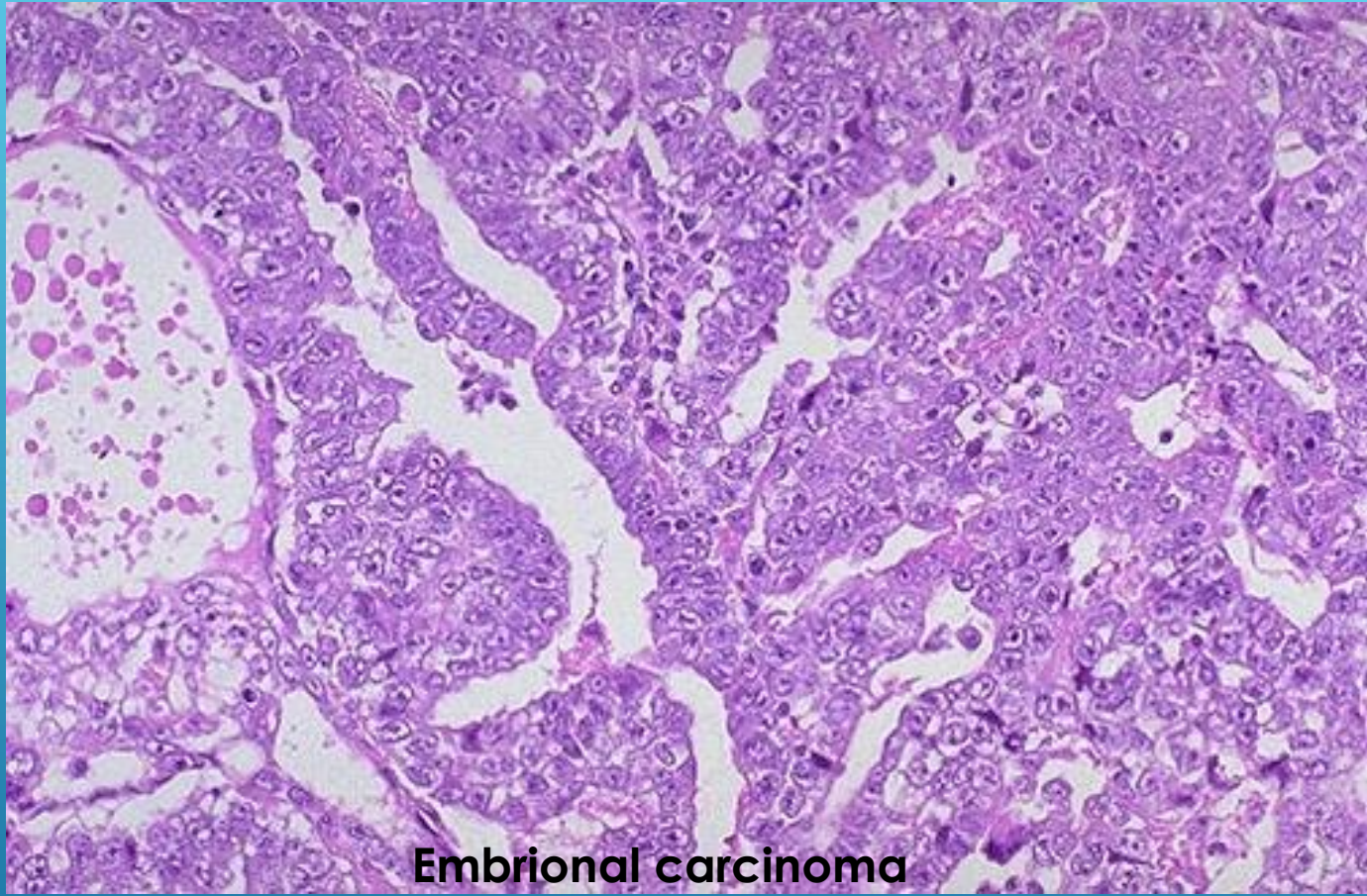
Mixed germ cell tumor testis





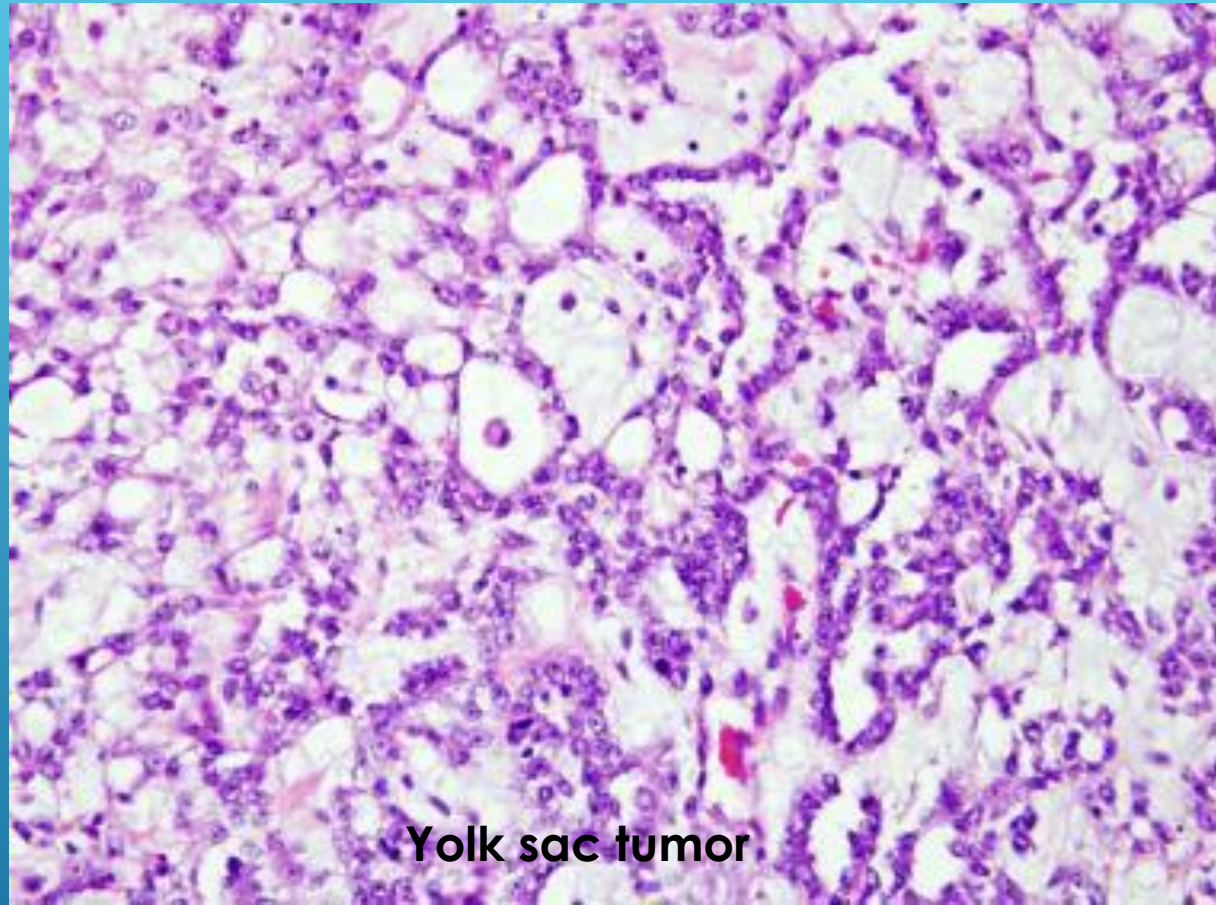






Embrional carcinoma





Yolk sac tumor